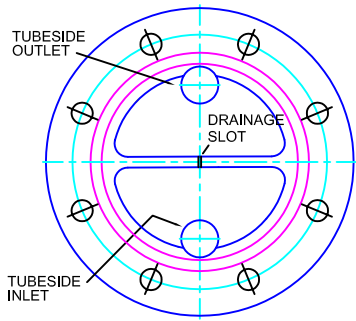
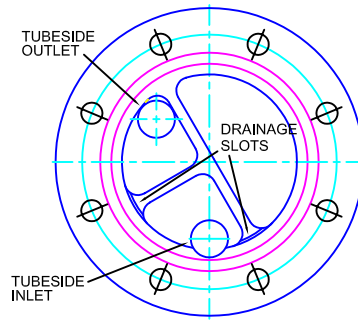


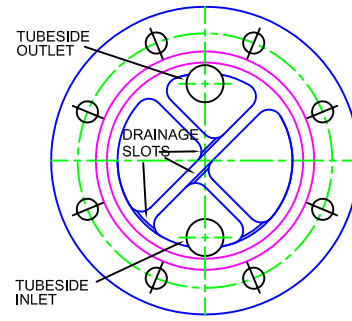
# HORIZONTAL UNIT DRAINABILITY



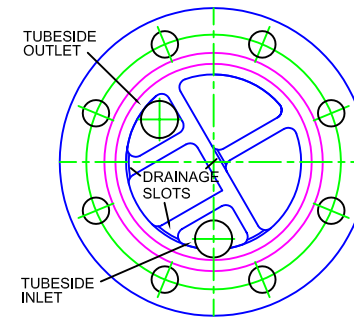
2-PASS DESIGN



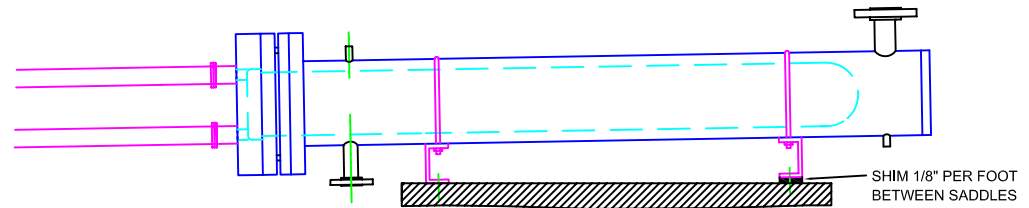
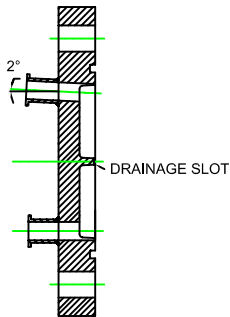
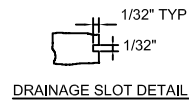
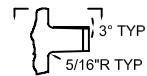
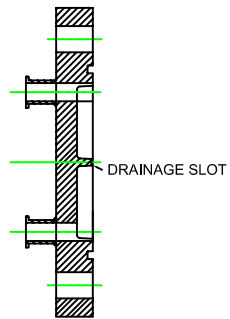
4-PASS DESIGN



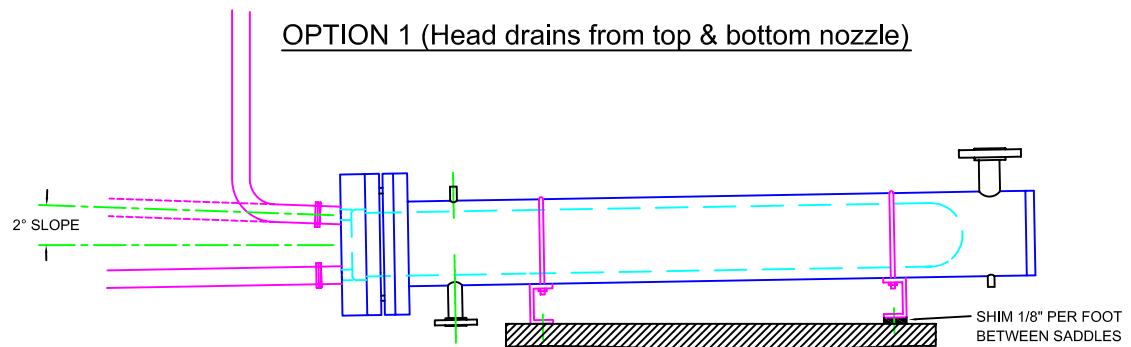
6-PASS DESIGN



8-PASS DESIGN



OPTION 1 (Head drains from top & bottom nozzle)



OPTION 2 (Head drains from bottom nozzle only)

TUBESIDE IS FULLY DRAINABLE WHEN REAR U-BOLT SADDLE IS SHIMMED 1/8" PER FOOT.  
 WHEN UNITS ARE SUPPLIED WITH WELDED SADDLES, THE SLOPE IS BUILT IN, NO SHIMMING IS REQUIRED.